

24 Karat Warranty

Jo-Dan International, Inc. (JDI) warrants to the original owner that the product delivered in this package will be free from defects in material and workmanship for three (3) years after purchase. For the warranty to apply, you must provide the date of purchase and include proof of purchase. The warranty does not cover the product if it is damaged in the process of being installed, or is otherwise misused.

Conditions

The above warranty is in lieu of any other warranty, whether expressed, implied or statutory, including but not limited to any warranty of merchantability, fitness for a particular purpose, or any warranty arising out of any proposal, specification or sample. JDI shall not be liable for incidental or consequential damages. JDI neither assumes nor authorizes any person to assume for it any other liability.

Registration

IMPORTANT: IN ORDER TO BE ELIGIBLE FOR THE PRODUCT WARRANTY, YOU MUST COMPLETE THE REGISTRATION PROCESS ON OUR WEBSITE AT WWW.JDITECH.COM WITHIN 10 DAYS OF PURCHASE.

Disclaimer

The manufacturer does not make any representations or warranties (implied or otherwise) regarding the accuracy and completeness of this document and shall in no event be liable for any loss of profit or any other commercial damage, including but not limited to special, incidental, consequential, or other damages. JDI's policy is that all products meet their performance criteria. If the product performance criteria specified has failed, however, we will replace the product for the useable life of the product. No part of this document may be reproduced or transmitted in any form by any means, electronic or mechanical, including photocopying, recording or information recording and retrieval systems without the express written permission of the manufacturer. All brand names and product names used in this document are trademarks, or registered trademarks of their respective holders. JDI also reserves the right to update or revise the device or this documentation at any time without obligation to notify any individual or entity of such update, or revision. Revised versions of this document may be requested in writing to JDI. Copyright © 2005 Jo -Dan International, Inc. All rights reserved.

FCC Statement

This device generates and uses radio frequency and may cause interference to radio and television reception if not installed and used properly. This has been tested and found to comply with the limits of a Class B computing device in accordance with the specifications in Part 15 of FCC Rules. These specifications are designed to provide reasonable protection against such interference in a residential installation. However, there is no guarantee that interference will not occur in a particular installation. If this device does cause harmful interference to radio or television reception, which can be determined by plugging the device in and out, the user can try to correct the interference by one or more of the following measures: Reorient or relocate the receiving antenna. Increase the separation between the device and receiver. Connect the computer into an outlet on a circuit different from that to which the receiver is connected. Consult the dealer or an experienced radio/TV technician for help.

GoldX® Products

GXMU-1200

USB TO SERIAL CONVERTER

Installation Manual & User Guide

Congratulations on your purchase of the GoldX™ USB to Serial Adapter. This adapter offers you the ability to convert your serial based peripherals to the USB port.

The GoldX USB to Serial Adapter product package includes the following items:

- USB Serial Adapter
- This User's Manual

System Requirements

- Pentium III or Higher Class Processor
- One standard USB port (4 pin)
- One of the following

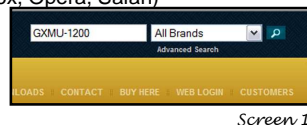
Operating systems

- Windows 2000 Professional
- Windows 2000 Server
- Windows XP Home
- Windows XP Professional (32 & 64 bit)
- Windows Server 2003 (32 & 64 bit)
- Windows Vista (32 & 64 bit)
- Windows Server 2008 (64 bit)
- Windows 7 (32 & 64 bit)

Installation Instructions

Note: A compressed file Extractor/Expander is required to install this driver. If you do not have one, you may download a free trial or free extractor out of one of the following sites: www.pkware.com www.winzip.com www.rarlab.com www.stuffit.com For those with Windows XP and newer Windows Versions, Windows has a Compressed File Extractor built in to it.

1. Open Web browser (examples: Internet Explorer, Fire Fox, Opera, Safari)
2. In the address bar, type **www.jditech.com**.
3. Click **Go** or press **Enter**
4. Type **GXMU-1200** in search field
5. Click **the magnifying glass icon** (Screen 1)
6. This will display the information page for the GXMU-1200 and GXMU-1201 (Screen 2)
7. Scroll to bottom
8. Click on "Drivers and Firmware" (Screen 3)



Informational Links:

[Drivers and Firmware](#)

[Click Here For Frequently Asked Questions](#)

[Click Here For Data Sheet](#)

[Spec Sheets Available For Registered Customers](#)

[User Guide](#)

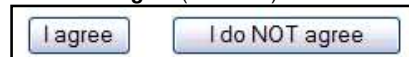
Screen 1

9. The driver list will show (Screen 4)

Drivers	
Windows 2000 Pro	Download
Windows 2000 Server	Download
Windows Server 2003 (R2)	Download
Windows Vista Business (32 & 64 Bit)	Download
Windows Vista Enterprise (32 & 64 Bit)	Download
Windows Vista Home Basic (32 & 64 Bit)	Download
Windows Vista Home Premium (32 & 64 Bit)	Download
Windows Vista Ultimate (32 & 64 Bit)	Download
Windows XP Home	Download
Windows XP Pro	Download
Windows XP Pro - X64	Download

Screen 4

10. Find your operating system (screen may be different than the view above)
11. Click **Download**
12. The Driver Download Software License Agreement will show (Screen 5)
13. Scroll to bottom
14. Click **I agree** (Screen 6)



Screen 6

15. Follow instructions on the Web page (Screen 7)

Driver Download

If the download does not start automatically, please click below.

Download Now

Screen 7

16. Click **Save** (Screen 8)
17. Note the name of the file that you are downloading.
18. Choose location to save in and note it for step 28 (Screen 9 – next page)



Screen 2

Driver download

CAUTION: PLEASE READ THIS SOFTWARE LICENSE AND LIMITED WARRANTY CAREFULLY BEFORE YOU OPEN ANY PACKAGE CONTAINING MEDIA (E.G. DISKETTES OR CD-ROMS) WITH SOFTWARE PROGRAMS. BY OPENING THE PACKAGE AND UTILIZING THE MEDIA, YOU AUTOMATICALLY ACCEPT THIS SOFTWARE LICENSE AND LIMITED WARRANTY.

SOFTWARE LICENSE AND LIMITED WARRANTY

1. Instructions.

By opening this package and/or installing the Software, you agree for you and your company (you and, when applicable, your company, shall be referred to as "You" or "Your") to be bound by the terms of this Software License and Limited Warranty ("Agreement"). This Agreement applies to You and any subsequent licensee of the software program, magnetic media, and related documentation which may be provided in this media package or at our internet site (collectively "Software"). If you do not agree to this Agreement, do not open this package and (even if you have opened the package by mistake) return your GoldX product, this media and its package and all related materials (including, but not limited to, written materials, diskettes, binders, and hardware parts), to your place of purchase for a refund under its return policy.
2. License.

JDitech grants to You the non-exclusive right to:

 - (a) use the Software in a computer provided the Software is installed on only one computer at a time;
 - (b) transfer the Software to another user, but only if You transfer all the Software, and the other user agrees in writing to the terms of this Agreement.
3. Restrictions.

Screen 5

File Download

Do you want to open or save this file?

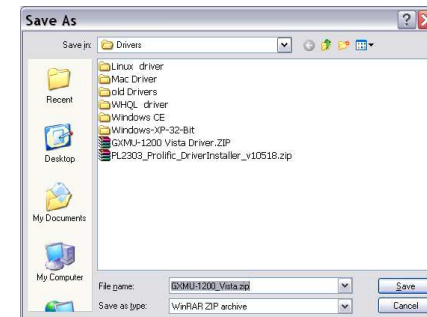
Name: GXMU-1200_Vista.zip
 Type: WinRAR ZIP archive, 2.14MB
 From: www.jditech.com

Always ask before opening this type of file

While files from the Internet can be useful, some files can potentially harm your computer. If you do not trust the source, do not open or save this file. [What's the risk?](#)

Screen 8

19. Find download file in My Computer (Windows 2000 or XP) or in Computer (Windows Vista or Windows 7)
20. Right click the name of the file downloaded in step 16 and 17 (Screen 8)
21. Select a directory
22. Extract files to chosen location
23. Plug in your GXMU-1200 or GXMU-1201
24. The first screen of the Found New hardware wizard will show. (Screen 10)



Screen 9

Found New Hardware Wizard

Welcome to the Found New Hardware Wizard

Windows will search for current and updated software by looking on your computer, on the hardware installation CD, or on the Windows Update Web site (with your permission). [Read our privacy policy.](#)

Can Windows connect to Windows Update to search for software?

Yes, this time only
 Yes, now and every time I connect a device
 No, not this time

Click Next to continue.

Screen 10

25. Select any one of the buttons
26. Click **Next >**
27. Chose **Install from a list or specific location (Advanced)** (Screen 11)
28. Click **Next >**
29. Chose **Search for the best driver in these locations** (Screen 12)

Found New Hardware Wizard

Welcome to the Found New Hardware Wizard

This wizard helps you install software for: USB Serial Controller

If your hardware came with an installation CD or floppy disk, insert it now.

What do you want the wizard to do?

Install the software automatically (Recommended)
 Install from a list or specific location (Advanced)

Click Next to continue.

Screen 11

Found New Hardware Wizard

Please choose your search and installation options.

Search for the best driver in these locations. Use the check boxes below to limit or expand the default search, which includes local paths and removable media. The best driver found will be installed.

Search removable media (floppy, CD-ROM...)
 Include this location in the search: C:\GXMU-1200

Don't search. I will choose the driver to install. Choose this option to select the device driver from a list. Windows does not guarantee that the driver you choose will be the best match for your hardware.

Screen 12

30. **Uncheck Search removable media (floppy, CD-ROM...)**
31. Check **Include this location in the search:**
32. Click **Browse**
33. Select location of files extracted in step 17
34. Click **Next >**
35. If the hardware installation warning appears, click **Continue Anyway** (Screen 13)
36. Click **Finish**

Found New Hardware Wizard

Please wait while the wizard installs the software...

Hardware Installation

The software you are installing for this hardware: GoldX GXMU-1200 USB-to-Serial Bridge

has not passed Windows Logo testing to verify its compatibility with Windows XP. [Tell me why this testing is important.](#)

Continuing your installation of this software may impair or destabilize the correct operation of your system either immediately or in the future. Microsoft strongly recommends that you stop this installation now and contact the hardware vendor for software that has passed Windows Logo testing.

Screen 13

Found New Hardware Wizard

Completing the Found New Hardware Wizard

The wizard has finished installing the software for: GoldX GXMU-1200 USB-to-Serial Bridge

Click Finish to close the wizard.

Screen 14